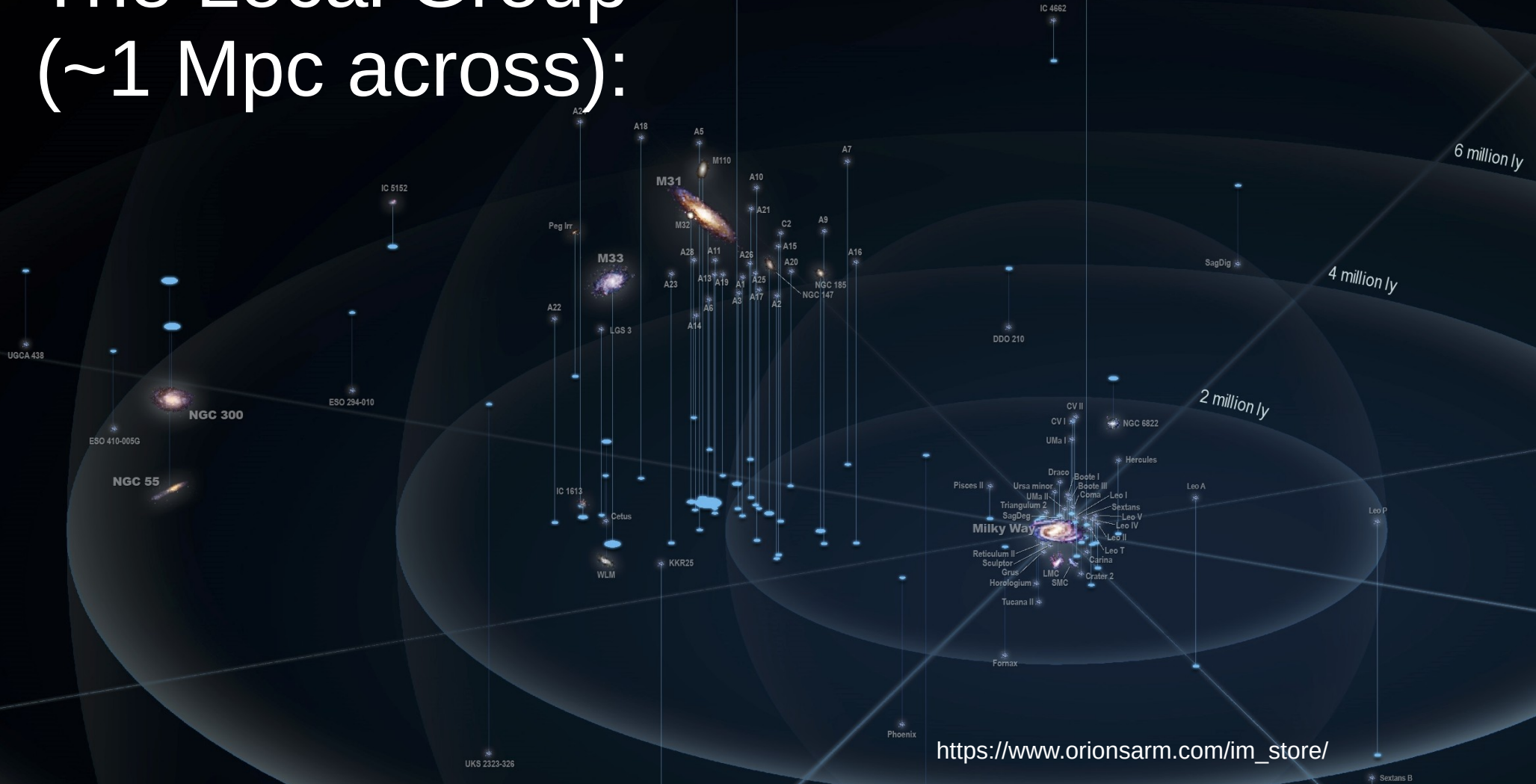


W13L2 – Galaxy Clusters

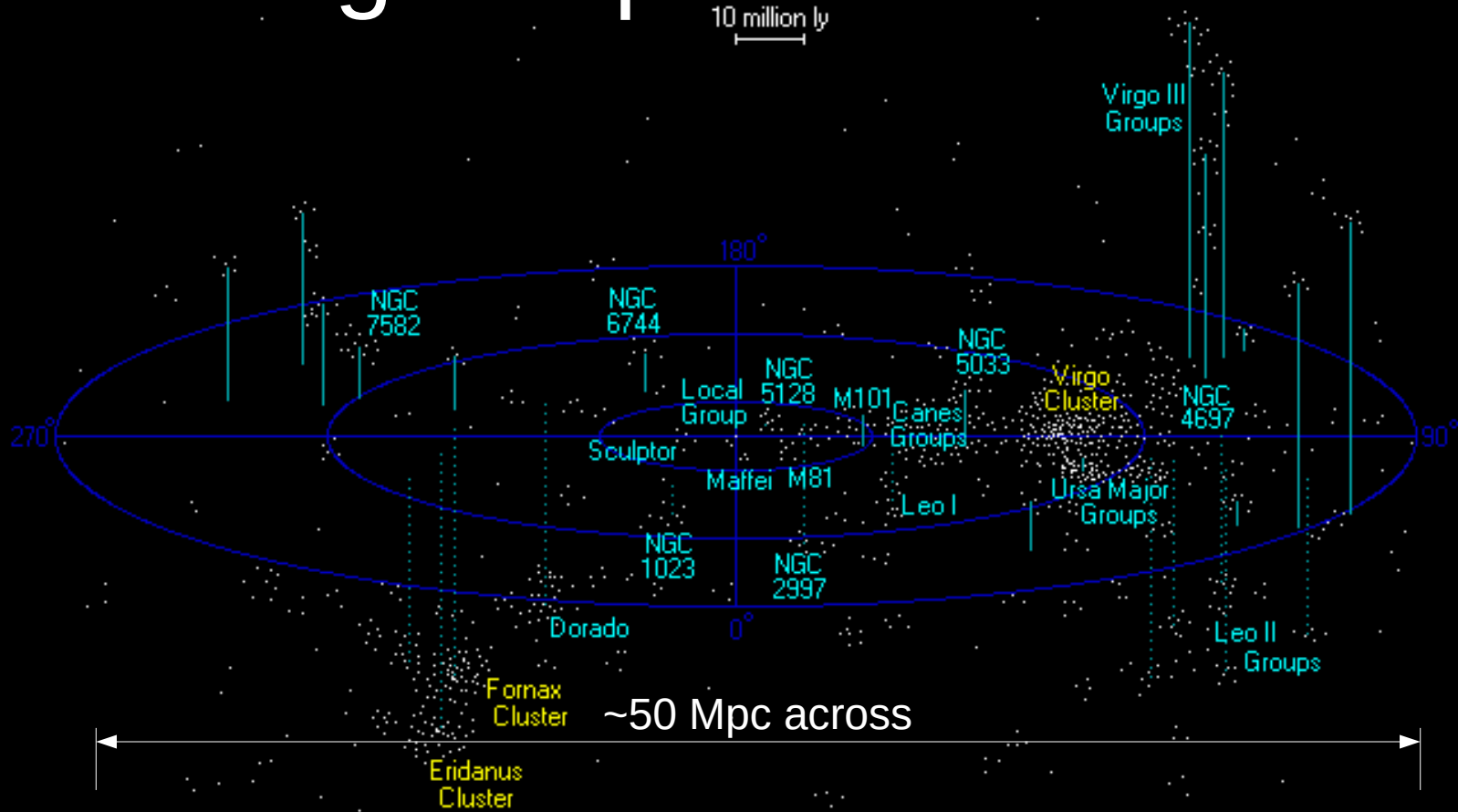
PSet #8: due Monday, April 22

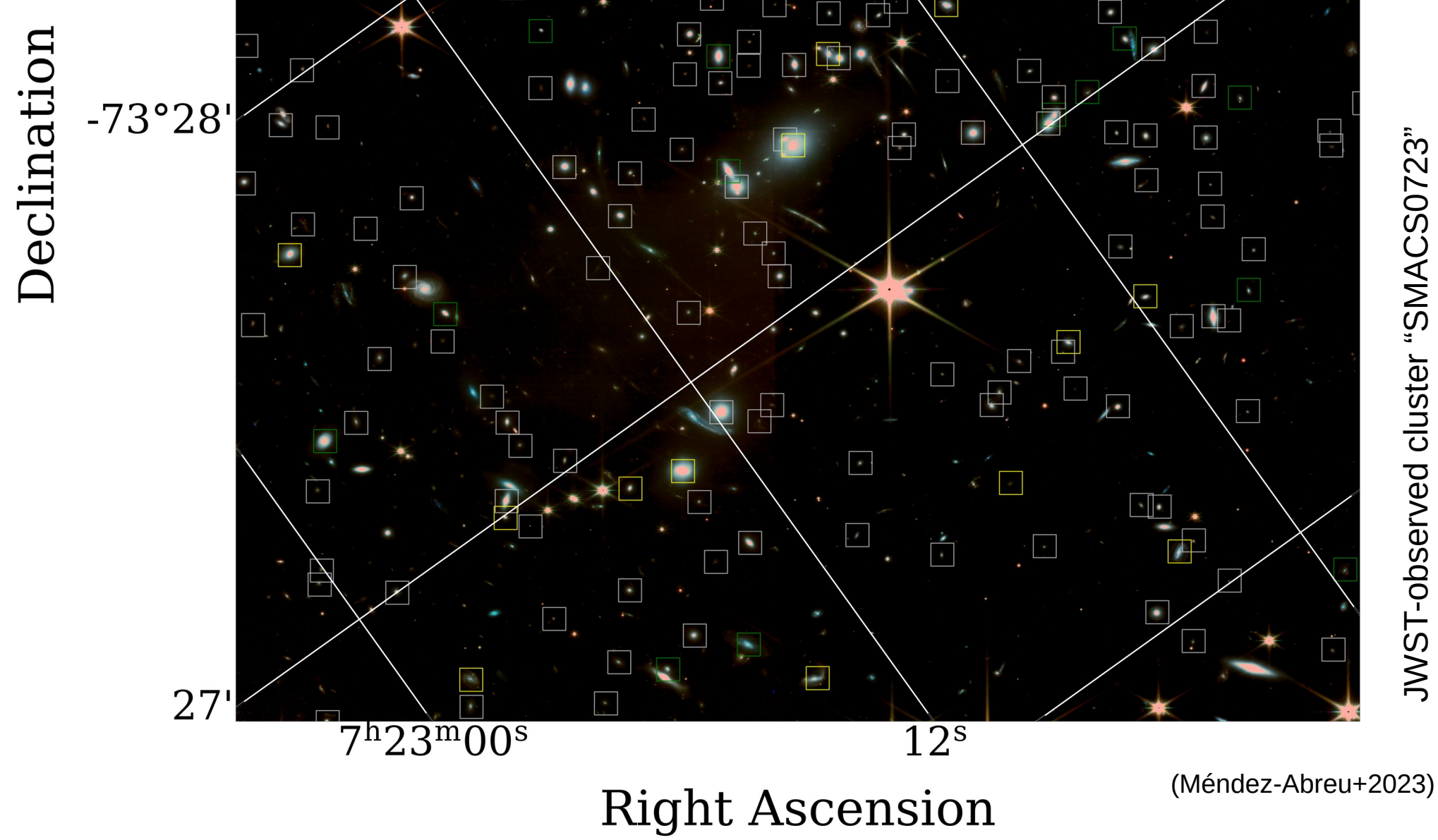
The Local Group (~1 Mpc across):



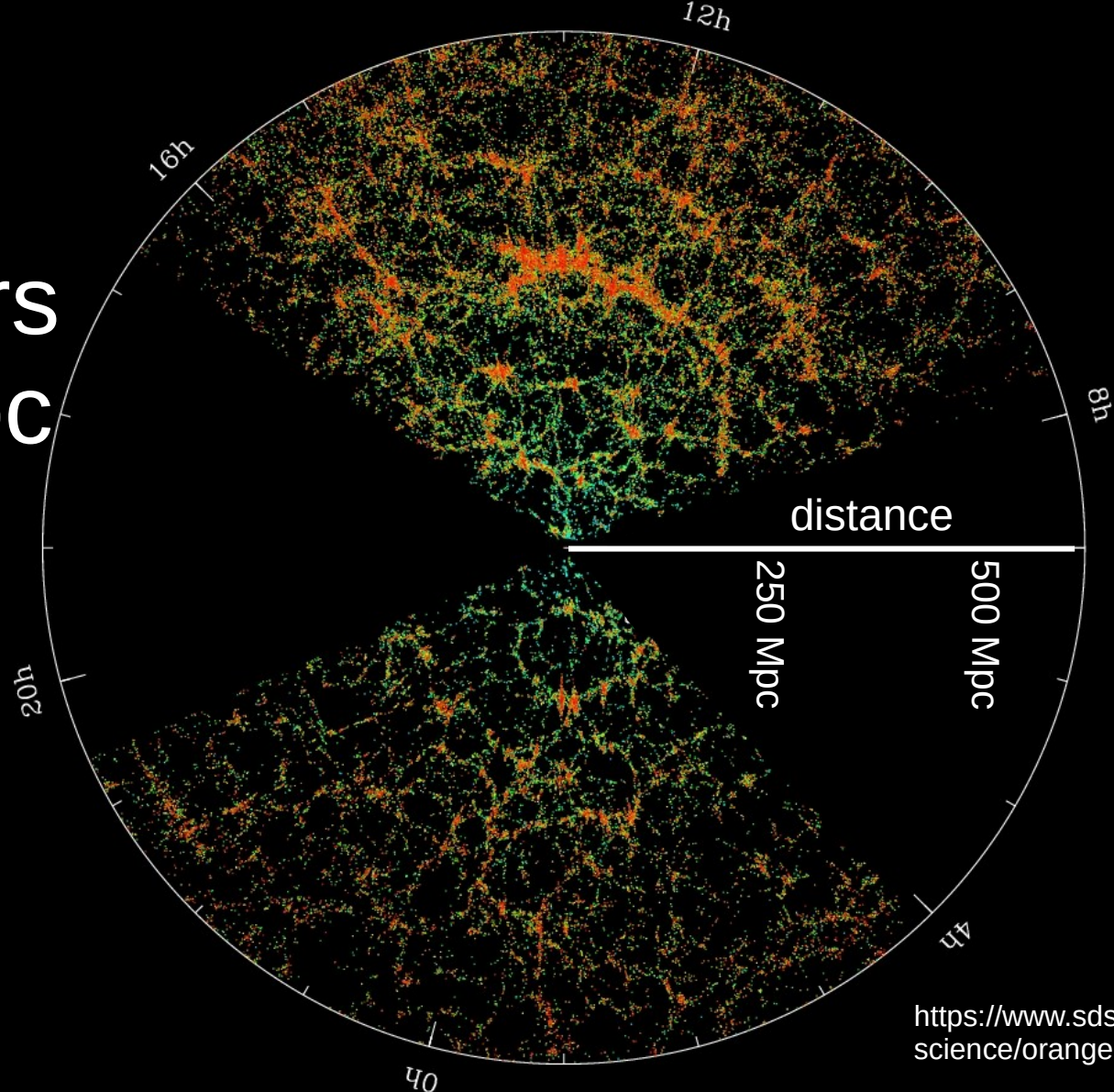
https://www.orionsarm.com/im_store/

Virgo Supercluster





Large-Scale Structure: Galaxy Clusters out to ~ 600 Mpc



Intergalactic Medium in "Stephen's Quintet" (~85 Mpc)

NGC 7319

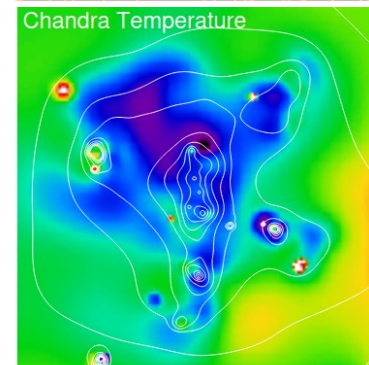
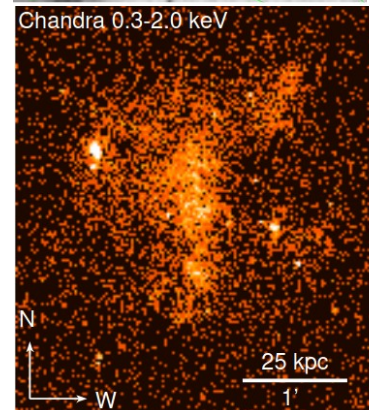
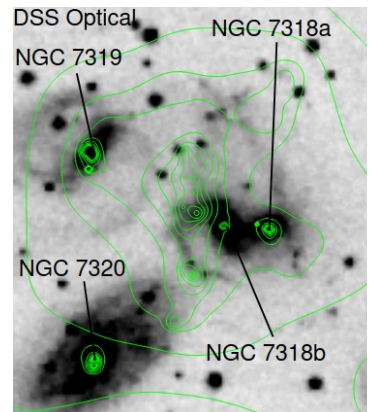
NGC 7318a

NGC 7318b

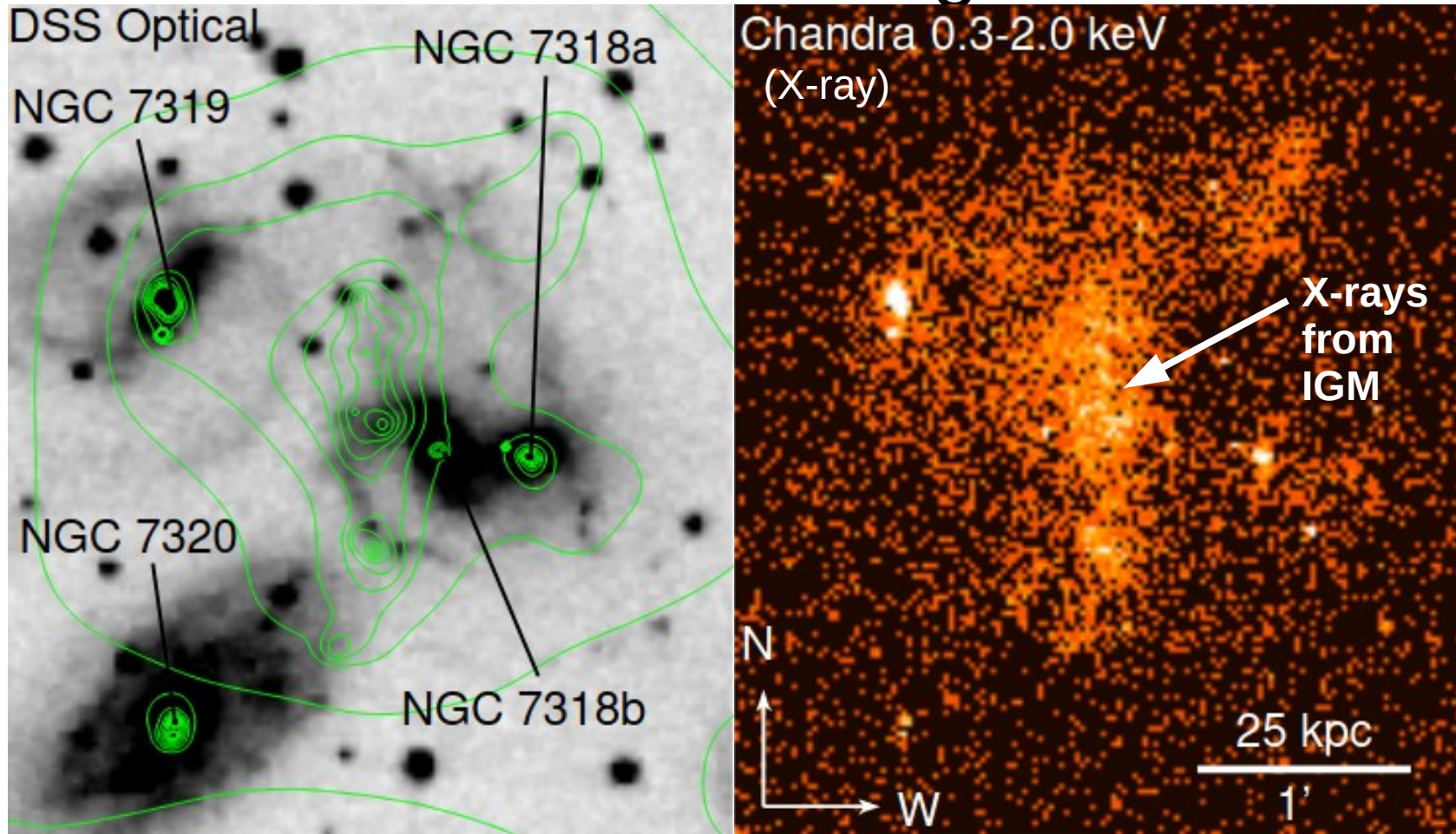
NGC 7317

Tidal Tails

NGC 7320
(not physically
associated)



Stephen's Quintet: Lots of X-ray emission where there are no galaxies!



Planetarium Show

- Slawson Hall: M or W (4/29 or 5/1) ?

Possible Topics:

- 1) The Dark Matter Mystery
- 2) From Earth to the Universe
- 3) The Hot & Energetic Universe
- 4) The Quest for Extrasolar World